



BOSCH

Register your
new device on
MyBosch now and
get free benefits:
**[bosch-home.com/
welcome](https://bosch-home.com/welcome)**



XA1504A5HW

[zh] 使用说明书
[en] User manual

2
23

目录

安全性	3	清洁和保养	16
一般注意事项	3	清洁电器	16
使用范围	3	处理故障	17
用户群的限制	3	功能故障	17
安全使用	3	温度问题	19
防止材料损坏	5	效果问题	19
光敏传感器和部件	5	运输、储存和废弃处理	21
法律声明	5	设置电器	21
正确使用	5	搬运电器	21
环境保护和节约	5	处置	21
了解机器	6	数据保护	21
电器	6	售后服务	21
状态 LED	7	型号	21
触摸显示屏	7	开放源代码许可信息	22
功能	9	技术规格	22
通知消息	9		
符号	10		
首次使用前	10		
供货范围	10		
电器拆包和使用准备	11		
执行初始设置	11		
操作基本知识	11		
开启电器	11		
在待机模式下唤醒电器	11		
使用电器	11		
向洗衣机发送洗涤程序	12		
电器充电	13		
将电器返回到待机模式	13		
重启电器	13		
关断电器	13		
校准电器	13		
软件更新	14		
自动安装软件更新	14		
基本设置	15		
基本设置概览	15		
更改基本设置	16		



安全性

请注意有关安全的信息以确保机器使用上的安全。

一般注意事项

可在此查看有关本说明书的一般信息。



- 请仔细阅读本说明书。唯有如此才能安全有效使用本机器。
- 本说明书适用于本机器的用户。
- 请注意安全注意事项和警告注意事项。
- 请妥善保管说明书及产品资料以备日后查阅或提供给下一位使用者。
- 拆开包装后请检查本机器。出现运输损坏时请勿连接本机器。

使用范围

为了能够安全并正确地使用本机器，请注意使用范围的注意事项。

本机器之用途应符合以下要件：

- 按照本说明书之规定。
- 仅限私人家庭和居家环境的室内区域。
- 本机器最高可在海拔 4000 米以下使用。

用户群的限制

避免孩童或容易发生危险情况的人士受到危害。

凡年满 8 岁的孩童，身体、感官或智力有缺陷的人士以及缺乏相关经验和知识的人士，应在负责安全使用机器人员的监督或指导下，了解使用机器可能带来的危险后，方能使用本机器。

严禁孩童将本机器用于嬉戏。

孩童除非在监督下，否则不得进行清洁及用户维护的工作。

请让 3 岁以下的孩童和家中宠物远离机器。

安全使用

使用本机器时，请注意这些安全注意事项。



警告 – 窒息危险!

- 孩童有可能用包装材料将头部套住或将自己缠住而造成窒息。
 - ▶ 请让孩童远离包装材料。

- ▶ 切勿让孩童用包装材料玩耍。
- 孩童可能会吸入或吞食小型而造成窒息。
 - ▶ 请让孩童远离小型部件。
 - ▶ 切勿让孩童用小型部件玩耍。



警告 – 电击危险!

湿气渗入会导致电击危险。

- ▶ 切勿让设备暴露在过热或潮湿的环境中。

防止材料损坏

请遵循这些说明，以免损坏材料和电器。

光敏传感器和部件

设备上安装的光学传感器和其他精密部件非常敏感。

请小心操作。

避免在设备上施加外力。

- 避免设备遭受任何剧烈冲击或掉落。
- 请勿踩踏设备。

法律声明

如不遵守下列安全说明，材料如有损坏，BSH 概不负责。

- 本电器目前只支持可洗衣物。
- 本电器只能分析由一种或两种纤维构成的衣物。
- 本电器支持处理大于底部玻璃（直径 1.5 cm）的污渍。
- 衣物分析的准确性可能受到颜色图案不均匀、水分或特殊类型深色染色的影响。
- 织物厚度偏小可能影响衣物和污渍分析的准确性。

正确使用

请遵守下列安全说明，以免造成人身伤害和财产损失。

- 只能使用随电器配套提供的充电线充电。
- 只能按照铭牌上的规定连接和操作充电线。
- 只能在室内存放电器及为其充电。
- 为了充分利用电池容量，电器应在室温下存放和运行。
- 请勿将电器置于低于 0 °C 或高于 40 °C 的温度环境中。
- 切勿使用已损坏的充电线。请使用原装充电线进行更换。
- 将充电线从电源上拔下时，要拉拔电源插头，不要拉扯电源线。

- 不要将充电线从锋利的边缘上拉过或者让充电线缠住。
- 不要使用损坏的电器。
- 如果发生故障，请关闭电器，并将其从充电线和电源上断开。
- 出于安全考虑，仅允许经过授权的售后服务人员对电器进行维修、安装和更换操作。
- 在下列情况下，您必须立即停用电器并联系售后服务人员：
 - 如果液体进入电器内部。
 - 如果电器掉落并损坏。
- 防止电器受外部天气条件、湿度和热源影响。

环境保护和节约

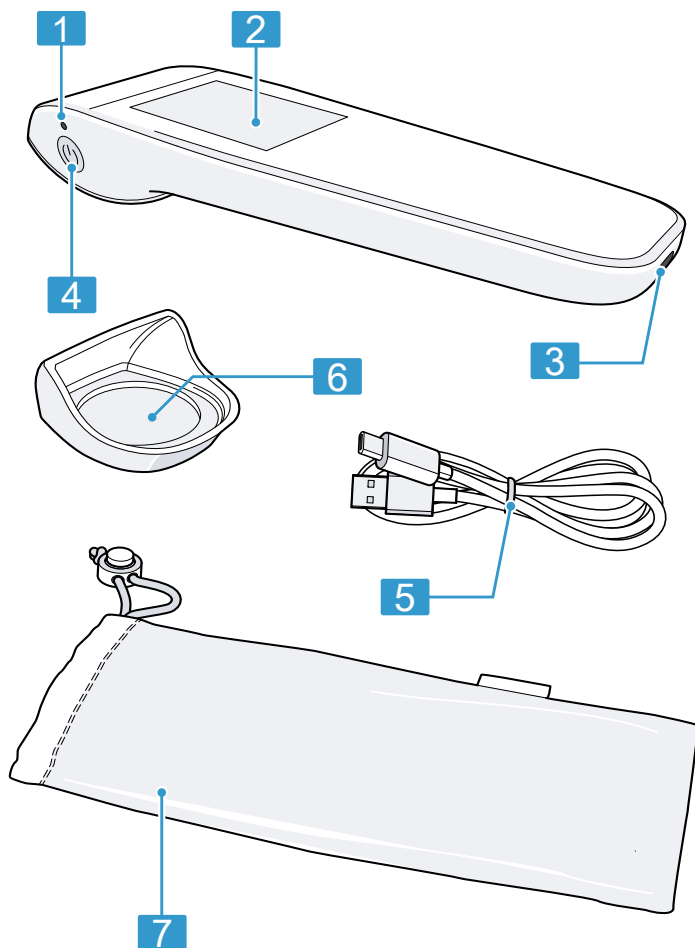
通过以节约资源的方式使用机器并正确处理可重复使用的材料来保护环境。

了解机器

了解机器的部件。

电器

您可以在此查看关于机器组件一览。




1	状态 LED	■ → "状态LED", 页码 7
2	触摸显示屏	■ → "触摸显示屏", 页码 7
3	充电插座	■ → "电器充电", 页码 13

4	电源按键	<ul style="list-style-type: none"> ■ → "开启电器", 页码 11 ■ → "关断电器", 页码 13 ■ → "在待机模式下唤醒电器", 页码 11
5	充电线	■ → "电器充电", 页码 13
6	罩盖	■ → "校准电器", 页码 13
7	存储袋	■ → "设置电器", 页码 21

状态 LED

状态 LED 将向您提供电器的操作状态和充电状态信息。

LED 显示屏	说明
	蓝牙处于可发现模式。

LED 显示屏	说明
	电器已与微信应用程序完成配对。
	电池电量耗尽。
	电池正在充电。
	电器处于待机模式。
	电池充满。

触摸显示屏

您可在找到触摸显示屏各个区域的概述。您可使用触摸显示屏控制电器，并了解其操作状态的信息。

如要操作，请按下触摸显示屏或使用水平或垂直滑动。



1	电池充电状态	→ "状态LED", 页码 7 → "电器充电", 页码 13
2	说明	→ "校准电器", 页码 13 → "软件更新", 页码 14
3	状态栏	
4	WiFi ¹ 网络状态	→ "添加WiFi 网络", 页码 16 → "删除WiFi 网络", 页码 16
5	功能菜单项	功能或菜单项显示在触摸显示屏的这一区域。 → "功能", 页码 9

¹ 无线网络是 Wi-Fi Alliance 的注册品牌。


功能

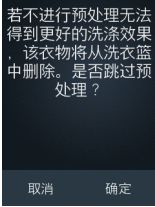


可在此查看电器主菜单中的各种功能概览。功能取决于电器的软件版本。

功能	功能范围	用途
	<ul style="list-style-type: none">■ 扫描和分析衣物。 → "使用快速织物分析", 页码 12	分析单件衣物，以提供其成分信息。
	<ul style="list-style-type: none">■ 扫描和分析衣物。■ 扫描和分析污渍。■ 去污说明 → "使用清除污渍", 页码 12	对有污渍的衣物进行分析，以提供去污信息。
	<ul style="list-style-type: none">■ 扫描和分析衣物。■ 扫描和分析污渍。■ 去污说明■ 将衣物添加至洗衣任务。■ 将衣物排除在洗衣任务之外。■ 关于推荐洗涤程序的信息 → "使用处理多件衣物", 页码 12 → "向洗衣机发送洗涤程序", 页码 12	扫描几件有污渍和无污渍的衣物，创建一个洗衣任务。为整个洗衣任务提供最佳的洗涤程序建议。

通知消息









可在此找到电器上各种通知消息的概览。

通知消息	功能	说明	建议
	→ "使用处理多件衣物", 页码 12	所扫描衣物的洗涤建议与当前洗衣任务的洗涤建议不匹配。	为了避免损坏衣物，取得最佳洗涤效果，请不要在当前洗衣任务中清洗该物品。

通知消息	功能	说明	建议
 <p>若不进行预处理无法得到更好的洗涤效果，该衣物将从洗衣篮中删除。是否跳过预处理？</p> <p>取消 确定</p>	→ "使用处理多件衣物", 页码 12	建议的去污程序已被跳过。	为达到最佳的洗涤效果，在将衣物加入洗衣任务之前，请先去除污渍。
 <p>完成 ▲ 单独洗涤 需单独处理且时间较长，未加入洗衣篮</p> <p>添加污渍 扫描下一件</p>	→ "使用处理多件衣物", 页码 12	所需的去污过程是一个耗时的过程。	取出有污渍的衣物，继续准备洗衣任务。 → "使用清除污渍", 页码 12
 <p>✓ 分析结果 正常洗涤即可处理该污渍</p> <p>其它</p> <p>知道了</p>	→ "使用处理多件衣物", 页码 12 → "使用清除污渍", 页码 12	污渍不需要任何特殊的预处理。	该衣物可直接在洗衣机中清洗。

符号

此处提供电器上的符号概览。

符号	说明
	返回
	电池电量耗尽
	电池正在充电
	语言
	显示状态栏
	关闭选项
	重复扫描
	错误消息 电器发生错误。 → "通知消息", 页码 9 → "手动校准电器", 页码 13

首次使用前

准备将本机器投入使用。

供货范围

拆开包装后，请检查所有部件是否在运输过程中发生损坏，供货是否完整。如有任何投诉意见，请联系出售该电器的经销商或我们的售后服务部。

随本品配套提供：


- X-Spect
- 罩盖
- 充电线
- 存储袋
- 快速入门指南
- 产品保修卡

电器拆包和使用准备

准备将本机器投入使用。

小心

使用不当会导致危险

- ▶ 只能使用随电器配套提供的充电线充电。
 - ▶ 请勿在低于 0 °C 或高于 40 °C 的温度下为电器充电。
1. 从电器上拆下所有包装材料和保护套管。
 2. 检查电器有无肉眼可见的损坏。
 3. 如果  闪烁，请为电器充电。
→ “**电器充电**”，页码 13
 4. 执行初始设置 → 页码 11。

执行初始设置

在首次开启或复位到出厂设置后，必须将电器与微信配对小程序及洗衣机配对。

前提条件

- 可访问 WiFi 家庭网络 (Wi-Fi¹)。
 - 已拥有 Home Connect 帐户。
 - 洗衣机已连接到您的 Home Connect 关联帐户。
- ▶ **注意事项：** 您可在我们的 Home Connect 网站找到关于该应用程序的信息：www.home-connect.com。

将电器与 Home Connect 帐户及洗衣机相关联。

→ “**自动配对电器**”，页码 11

微信配对小程序和电器将引导您完成配对的各个步骤。

自动配对电器


1. 开启电器 → 页码 11。
- ✓ 触摸显示屏显示欢迎屏幕。然后显示二维码。
2. 使用微信应用程序扫描二维码。

3. 按照微信配对小程序中的说明进行操作。
- ✓ 电器连接微信配对小程序。
- ✓ 电器连接 Home Connect 帐户。然后显示确认消息。
4. 按下“完成设置”。
- ✓ 将显示主菜单。
- ✓ 电器准备就绪。

操作基本知识

您可以在此了解操作机器的基本知识。

开启电器

- ▶ 按下并按住  按键 3 秒。
- ✓ 触摸显示屏显示欢迎屏幕，然后显示主菜单。

在待机模式下唤醒电器

前提条件： 电器处于待机模式。

→ “**状态 LED**”，页码 7

- ▶ 按下  按键。

使用电器

1. 通过滑动浏览到主菜单并选择功能。
 - → “**使用快速织物分析**”，页码 12
 - → “**使用清除污渍**”，页码 12
 - → “**使用处理多件衣物**”，页码 12
2. 扫描织物或污渍。

注意事项

为了提高检测和建议的准确性，请注意以下提示：

- 只能扫描干的污渍。如果扫描潮湿的织物或污渍，可能会弄脏镜头，此时需要用一块布清洁。
- 将电器紧紧压在衣服或污渍上，保持不动，直到显示屏显示“正在扫描”。
- 如果衣物上有彩色图案，请扫描颜色最深的地方。

¹ 无线网络是 Wi-Fi Alliance 的注册品牌。

- 如果衣物由多种面料构成，请扫描多处。
 - 将电器镜头对准污渍中心，以提高检测精度。
 - ✓ 电器分析织物和 / 或污渍。
3. 检查分析结果。
 4. 按照建议处理污渍，或 向洗衣机发送建议的洗涤程序 → 页码 12。

使用快速织物分析

1. 在主菜单中，选择快速织物分析功能。
- ✓ 触摸显示屏显示“握住扫描仪紧贴织物开始扫描”。
2. 将传感器紧贴织物。
3. 按下“立即扫描”。
- ✓ 电器扫描并分析织物。
- ✓ 触摸显示屏将显示织物的成分。
4. 要扫描另一件衣物，触摸“重新扫描”。
5. 如要关闭快速织物分析，触摸“关闭”。
- ✓ 将显示主菜单。

使用清除污渍

1. 在主菜单中，选择“清洁污渍”功能。
- ✓ 触摸显示屏显示“握住扫描仪紧贴污渍开始扫描”。
2. 将传感器紧贴污渍并按下“立即扫描”。
- ✓ 电器将扫描污渍。触摸显示屏随后将显示“握住扫描仪紧贴织物开始扫描”。
3. 将传感器紧贴织物并按下“立即扫描”。
- ✓ 电器将扫描织物并分析污渍。触摸显示屏随后将显示一条确认消息及污渍的成分。如果不需要预处理，触摸显示屏将显示“普通脏污”。
4. 触摸“开始处理”。
- ✓ 电器运行去污指导步骤。
5. 按照指导步骤去除污渍。

使用处理多件衣物

1. 在主菜单中，选择“处理多件衣物”功能。
- ✓ 触摸显示屏显示“握住扫描仪紧贴织物开始扫描”。
2. 将传感器紧贴织物并按下“立即扫描”。
- 如要在已扫描的织物中添加污渍，请按下“添加污渍”。然后扫描污渍，并按照去污说明进行操作，或按下“跳过”跳过去污步骤。
- ✓ 触摸显示屏显示“该项目已被添加到洗涤任务中”。
3. 按下“扫描更多”。
4. 重复此过程。
- 如果扫描的织物不适合洗衣量或必须去除污渍，触摸显示屏将显示一条通知消息。
→ “**通知消息**”，页码 9
5. 按下“完成”确认洗衣量。
- ✓ 电器对扫描织物进行分析。
6. 选择织物类型，然后按下“下一步”。
- 如果无需选择任何织物类型，按下“跳过”按钮。
7. 按下向洗衣机发送洗涤程序 → 页码 12 或按下“关闭”结束过程。
- ✓ 将显示主菜单。

向洗衣机发送洗涤程序

前提条件： 电器将显示推荐的洗涤程序。

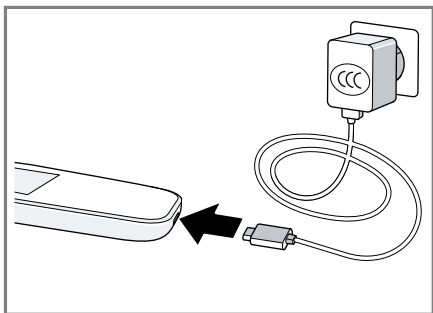
→ “**使用处理多件衣物**”，页码 12

1. 检查建议的洗涤程序。
- 使用垂直滑动手势浏览显示屏。
2. 按下“发送到洗衣机”。
- ✓ 洗涤程序已发送到洗衣机，但未手动启动。随后将显示确认发送的消息。
3. 按下“关闭”。
- ✓ 将显示主菜单。
4. 要启动洗涤程序，按下洗衣机上的启动按键。

电器充电

请使用随附的充电线给电器充电。

1. 将充电线连接到 USB 端口。



2. 将充电线连接到电器充电插座。
 - ✓ 状态 LED 亮起红色。
 - ✓ 当电器关断时，触摸显示屏显示电池充电状态。开启时，它显示状态栏。
 - ✓ 当电池充满电时，状态 LED 亮起绿色。
3. 从电器上拔下充电线。
4. 从 USB 端口上拔下充电线。

将电器返回到待机模式

- ▶ 按下 按键。
- ✓ 状态 LED 闪烁绿色。

重启电器

- ▶ 按下 按键大约 7 秒钟。
- ✓ 电器重新启动。

关断电器

1. 按下并按住 按键 3 秒。
- ✓ 触摸显示屏将显示“是否要关断设备？”。
2. 触摸“是”。
- ✓ 电器关断。

校准电器

电器会定期提醒您进行校准。
此时可以立即或稍后校准电器。

注意事项： 稍后校准电器会影响检测精度。

→ “自动校准电器”，页码 13

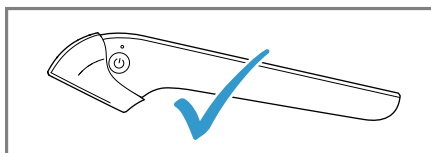
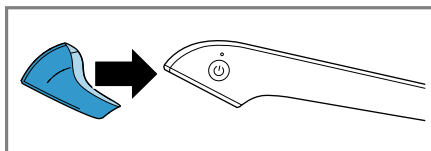
→ “手动校准电器”，页码 13

自动校准电器

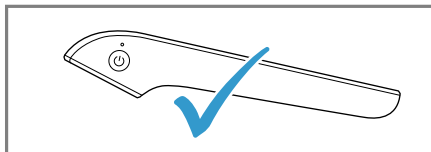
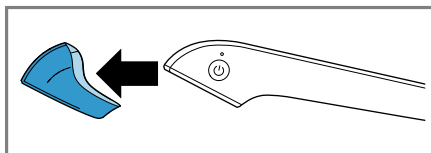
注意事项： 按下“跳过”按钮，跳过校准。状态栏显示 。

前提条件： 触摸显示屏显示“X-Spect 传感器需要校准。在启动校准前，请盖上电器罩盖。”

1. 将罩盖盖在传感器上。



2. 按下“启动”。
 - ✓ 将显示校准画面。随后触摸显示屏将显示“校准已完成。现在已可拆下罩盖。”
3. 拆下罩盖。

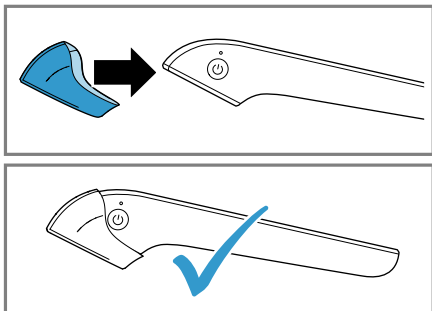


4. 按下“确定”。
 - ✓ 将显示主菜单。
 - ✓ 电器准备就绪。

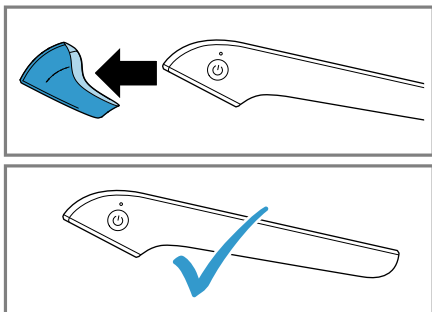
手动校准电器

1. 向下拉，打开主菜单中的状态栏。

2. 按下状态栏。
- ✓ 将打开“设置”菜单。如果之前没有跳过校准，请手动打开“设置”中的“校准”菜单项。
3. 将罩盖盖在传感器上。



4. 按下“开始校准”。
- ✓ 将显示校准画面。随后触摸显示屏将显示“校准已完成。现在已可拆下罩盖。”
5. 拆下罩盖。



6. 按下“确定”。
- ✓ 将显示主菜单。

软件更新

软件更新将进一步优化电器并添加新功能。

自动安装软件更新

启动时，电器会搜索是否有新的软件更新。

前提条件： 触摸显示屏将显示“有新的软件更新。是否要更新？”

- ▶ 按下“更新”。

如果电池电量低于 75%，触摸显示屏将显示“请将设备连接到充电器”。
连接充电器。

→ “电器充电”，页码 13

- ✓ 将开始安装软件更新，随后电器将重启。

基本设置

您可以视您的需求设置机器。

基本设置概览

您可以在此查看基本设置和出厂设置一览。基本设置取决于机器的设备。

基本设置	选项	描述
WiFi	添加 WiFi 网络 删除 WiFi 网络	添加新的 WiFi 网络。 → "添加 WiFi 网络", 页码 16 删除已保存的 WiFi 网络。 → "删除 WiFi 网络", 页码 16
添加洗衣机	无可用选项。	通过微信应用程序扫描二维码，将一台新洗衣机连接至电器。洗衣机必须与家居互联应用程序配对。
校准	无可用选项。	手动校准电器 → 页码 13。
语言	参见电器上的选项。	设置语言。
待机	<ul style="list-style-type: none"> ■ 30 秒 ■ 1 分钟 ■ 2 分钟 ■ 3 分钟 ■ 5 分钟 	电器切换至待机模式的等待时间。 → "设置待机时间", 页码 16
自动关断	<ul style="list-style-type: none"> ■ 5 分钟 ■ 10 分钟 ■ 15 分钟 ■ 20 分钟 ■ 30 分钟 	电器自动关断的等待时间。 → "设置自动关断", 页码 16
查看 T&C	无可用选项。	扫描二维码，查看电器的条款和条件。
复位	无可用选项。	将更改后的设置恢复为出厂设置。 → "复位电器", 页码 16 首次使用时必须配置设置。 → "执行初始设置", 页码 11
设备信息	无可用选项。	显示电器信息。

更改基本设置

1. 在主菜单中向下滑，打开状态栏。
 - ✓ 状态栏显示设置。
2. 在状态栏中下拉设置。
 - ✓ 将打开“设置”菜单。
3. 按下所需的菜单项，更改设置。
 - 使用垂直滑动动作浏览菜单。
4. 按下退出菜单项。
5. 按下关闭设置。

设置待机时间

您可定义切换到待机模式的等待时间。

1. 打开“设置”。
2. 按下“待机”。
3. 按下所需的时间段。
 - ✓ 新的时间已被保存。
4. 按下 < 退出菜单项。
5. 按下 × 关闭设置。

设置自动关断

您可定义电器自动关断的等待时间。

1. 打开“设置”。
2. 按下“自动关断”。
3. 按下所需的时间段。
 - ✓ 新的时间已被保存。
4. 按下 < 退出菜单项。
5. 按下 × 关闭设置。

复位电器

您可将电器复位到出厂设置。

1. 打开“设置”。
2. 按下“复位”。
 - ✓ 触摸显示屏将显示“复位操作将恢复出厂设置。所有配置都将丢失。”
3. 按下“复位”。
 - ✓ 触摸显示屏显示“是否确定要复位设备？”。
4. 按下“是”。
 - ✓ 电器重新启动。
5. 执行初始配置 → 页码 11。

添加 WiFi 网络

您可在电器上存储多达 10 个 WiFi 网络。

1. 打开“设置”。
2. 按下 WiFi。
3. 按下“添加 WiFi”。
 - ✓ 触摸显示屏将显示一个二维码。
4. 使用微信应用程序扫描二维码。
5. 按照移动设备上微信配对小程序中的说明进行操作。

删除 WiFi 网络

1. 打开“设置”。
2. 按下 WiFi。
3. 按下 WiFi 网络旁边的回收站符号。
 - ✓ 触摸显示屏显示“是否确定删除 [‘WiFi 名称’] WiFi 连接？”。
4. 按下“是”。
 - ✓ WiFi 网络已被删除。

清洁和保养

为了让机器长时间保持功能顺畅，请仔细进行清洁和保养。

清洁电器

请按照规定清洁电器。这可确保不会因清洁不当或清洁产品不合适而损坏电器的不同零件和表面。

► 请按照清洁说明进行操作。

零件	清洁说明
电器镜头	使用湿软毛巾 (超细纤维) 进行清洁
镜头盖	吹干净校准材料上的灰尘。

处理故障

机器上发生的小故障，大多能自行解决。联系客服服务之前，请先运用处理故障信息尝试自行解决。此举可避免不必要的支出。

警告

受伤危险!

维修不当可能发生危险。

- ▶ 仅限合格的专业人员才能对本机器进行维修。
- ▶ 若本机器故障，请致电客户服务。

功能故障

故障	原因	故障排除
出错，请检查 WiFi 连接。	设备上未配置可用的 WiFi 连接。	<ul style="list-style-type: none"> ▶ 检查您的路由器是否可用。 ▶ 在设备上配置一个新的 WiFi 网络。 → "添加 WiFi 网络", 页码 16
无法连接到我们的云端，请检查您的互联网连接或稍后重试。	当前的 WiFi 网络不具备可用的互联网连接。	▶ 检查您的路由器是否可用。
	当前处于维修停机时间，X-Spect 云端不可用。	▶ 请稍后重试。
云端出错，请稍后再试。	当前处于维修停机时间，X-Spect 云端不可用。	▶ 请稍后重试。
需要校准。请盖上镜头盖并按下“启动”。	为了提高检测和建议的准确性，应不时校准设备。	▶ → "自动校准电器", 页码 13
出错，请确保已安装镜头盖。	在校准期间，设备未在传感器上检测到镜头盖。	<ul style="list-style-type: none"> ▶ 在设备上盖上镜头盖。 注意事项： 在显示屏显示“正在校准”期间，请勿拆下镜头盖。
校准失败。请稍后重试。	设备校准数据未被保存到 X-Spect 云端。	▶ 请稍后重试。
发送程序失败。请确保电器已连接到互联网。	电器未连接到互联网。	<ul style="list-style-type: none"> ▶ 请检查电器的互联网连接。详细信息请参见电器用户手册。如果问题继续存在，请联系客户服务。
发送程序失败。请不要手动控制家电。	X-Spect 正在向电器发送程序。	▶ 在 X-Spect 设备成功将程序传送到电器之前，请勿手动控制您的电器。

故障	原因	故障排除
发送程序失败。另一个程序目前正在进行中。	电器上有程序正在运行。	<ul style="list-style-type: none"> ▶ 停止电器上正在运行的程序。 ▶ 等待程序完成，然后重试。
设备注册失败，请重启设备以重复设置。	在设备设置过程中出错。	<ol style="list-style-type: none"> 1. → "重启电器", 页码 13 2. → "执行初始设置", 页码 11 3. 如果问题继续存在，请联系客户服务 → 页码 21。
该设备未注册，请联系客户服务。	在设备设置过程中出错。	▶ 联系客户服务 → 页码 21。
服务器无法验证设备身份。请重新设置您的设备。	设备权限被取消。服务器无法识别您的设备。	<ol style="list-style-type: none"> 1. 复位设备。→ 页码 16 2. 设置设备。→ 页码 11
有新的条款和条件可用。请在家居互联应用程序中接受该条款和条件，然后重试。	必须接受新的条款和条件。	▶ 接受家居互联应用程序中的新条款和条件。
已达到配额限制，请稍后再试。	您的设备在一天内向我们的云端发出请求过多。为改善云端性能，您的设备将被暂时禁用 24 小时。	▶ 请稍后重试。
检测到充电电流过低，请更换适配器。	例如，如果适配器故障或充电线无法充电，设备会检测到慢速充电速度。	<ol style="list-style-type: none"> 1. 尝试使用不同的 CCC 认证适配器或充电线。 2. 如果问题继续存在，请联系客户服务 → 页码 21。
未找到充电器。如果问题继续存在，请联系客户服务。	设备无法检测到充电器给电池充电。如果适配器故障或充电线无法充电，将会出现这种情况。	<ol style="list-style-type: none"> 1. 尝试使用不同的 CCC 认证适配器或充电线。 2. 如果问题继续存在，请联系客户服务 → 页码 21。
未找到传感器。如果问题继续存在，请联系客户服务。	设备无法检测到传感器。	<ol style="list-style-type: none"> 1. 重新启动设备。→ 页码 13 2. 如果在重新启动设备后仍然存在，请联系客户服务 → 页码 21。
未找到温度传感器。如果问题继续存在，请联系客户服务。	设备无法检测到传感器。	<ol style="list-style-type: none"> 1. 重新启动设备。→ 页码 13 2. 如果在重新启动设备后仍然存在，请联系客户服务 → 页码 21。

故障	原因	故障排除
未找到触感传感器。如果问题继续存在，请联系客户服务。	设备无法检测到传感器。	1. 重新启动设备。→ 页码 13 2. 如果在重新启动设备后仍然存在问题，请联系客户服务 → 页码 21。
未找到测量传感器。如果问题继续存在，请联系客户服务。	设备无法检测到传感器。	1. 重新启动设备。→ 页码 13 2. 如果在重新启动设备后仍然存在问题，请联系客户服务 → 页码 21。
未找到触摸面板。如果问题继续存在，请联系客户服务。	设备无法检测到显示屏。	1. 重新启动设备。→ 页码 13 2. 如果在重新启动设备后仍然存在问题，请联系客户服务 → 页码 21。
未找到 WiFi / BT。如果问题继续存在，请联系客户服务。	设备无法检测到 WiFi 适配器。	1. 重新启动设备。→ 页码 13 2. 如果在重新启动设备后仍然存在问题，请联系客户服务 → 页码 21。

温度问题

故障	原因	故障排除
检测到高温。如果问题继续存在，请联系客户服务。	在操作过程中，设备检测到温度过高。为避免电池发生意外，设备将自动关闭。	1. 为防止损坏，请勿将电池暴露在 60 °C 或以上的高温环境中。 2. 如果在正常工作环境中也存在这个问题，请联系客户服务 → 页码 21。
设备温度过低，已禁止充电。如果问题继续存在，请联系客户服务。	在操作过程中，设备检测到温度过低。为延长电池使用寿命，设备将自动停止充电。	1. 为提高充电效率，不要将电池暴露在低温环境下。 2. 如果在正常工作环境中也存在这个问题，请联系客户服务 → 页码 21。

效果问题

故障	原因	故障排除
出错，请确保扫描的是织物。	在扫描过程中，设备无法检测到有衣物接触传感器。	▶ 将设备紧紧压在衣服上，保持不动，直到显示屏显示“正在扫描”。
出错，请确保扫描的是污渍。	在扫描过程中，设备无法检测到有污渍接触传感器。	▶ 将设备紧紧压在污渍上，保持不动，直到显示屏显示“正在扫描”。

故障	原因	故障排除
无法将该织物纤维装入洗衣篮。请将该衣物放置一旁。	设备检测到该织物纤维无法与之前放入洗衣篮中的纤维一起洗涤，例如，试图将纯棉和丝绸衣物一起洗涤。	<div><div>1. 为避免损坏织物，请将衣物放置一旁，不要将其放入洗衣机的这个洗衣篮中。</div><div>2 将其与其它类似衣物单独清洗。</div></div>

运输、储存和废弃处理

您将在此将了解如何准备运输和储存机器。此外，您也可以了解如何处理旧机器。

设置电器

请妥善存放电器，避免损坏。

注意事项：将电器放在干燥的地方，防止高温和外部影响。
当不使用电器时，务必要将电器套入所提供的存储袋中存储。

1. 关断电器。→ 页码 13
2. 将电器套入存储袋中。

搬运电器

设备中的锂离子电池须符合危险品法规的有关规定。电池可由用户通过陆运输，无需其他任何要求。

如果由第三方处理（例如空运或货运），则必须满足关于包装和标识的特殊要求。在这种情况下，在准备发货时必须咨询危险品专家。

处置

以环保的方式处置包装材料，可让有价值的材料得以重新利用。
请以负责任的方式回收设备、电池、附件和包装材料。



不要将设备和电池
当作家庭垃圾处
置。

集成式电池只能由专业人员拆除并废弃。

旧电器

该电器包含可充电锂离子电池。因此，电器只能由获得授权的售后服务商或经销商处理。

数据保护

请参见数据保护信息。

当电器首次通过有互联网连接的家庭网络进行注册时，电器会把以下类别的数据传输到家居互联服务器（初始注册）：

- 唯一电器识别信息（包含电器代码和已经安装的 WiFi 通信模块的 MAC 地址）。
- Wi-Fi 通信模块的安全证书（为了确保安全的数据连接）。
- 电器的当前软件和硬件版本。
- 之前进行的任何复位出厂设置的操作。

初始注册为您正常使用家居互联各功能做好准备，且仅当初次使用这些功能时才需要进行初始注册。

注意事项：确保家居互联功能仅可与家居互联应用程序同时使用。可以通过家居互联应用程序获得有关数据保护的信息。

售后服务

如果您有任何疑问或无法自行排除故障，请联系我们的售后服务部门。我们会不断寻找适当的解决方案，避免维修人员不必要的登门造访。
在联系售后服务部门时，需要提供设备的型号（E 编号）。
您可通过下列电话号码联系售后服务部门：

CN 400 885 5888

型号

型号（E 编号）可在铭牌上和设备设置中找到。

铭牌位于包装内侧。

E 编号也可从“设置”的“设备信息”菜单项中找到。

→ “基本设置概览”，页码 15

记下设备的详细信息和售后服务电话号码，以便能够快速找到它们。

开放源代码许可信息

本设备所使用的软件中包含由版权所有
者许可的免费或开源软件。
您可以通过以下方式获取这些软件的许
可证信息，微信配对程序或设备菜
单：“设置 -> 系统信息 -> 开放源代码
许可二维码”。
您也可以将查看需求发送至
ossrequest@bshg.com 或写信至以下
地址BSH Hausgeräte GmbH GmbH,
Carl-Wery-Str.34, D-81739 München,
Germany，并注明“OSSREQUEST”。
您需承担因此产生的费用。我们将在您
购买产品的三年之内或在可获得产品支
持和配件的期限内提供此项服务。

规范和认证	<ul style="list-style-type: none">■ SRRC■ BQB■ RoHS■ UN38.3■ GB 31241-2014■ GB4943.1■ GB9254、CISPR 32、CISPR 35■ GB/T 17618-2015
-------	--

技术规格

您可以在此处查看机器的数据和纪录。

型号	XA1504A5HW
电池容量	内置 1000 mAh 锂离子充电电池
系统电源 (正常状态)	3.7 V / 250 mA
显示屏	2.0 英寸 240x320 LED 背光双触摸显示屏，采用 IPS 技术和全 RGB
处理器	1.0 GHz 处理器
存储器	2 Gb NAND 闪存
WiFi	802.11a/b/g/n/ac 2.4 Ghz，不支持 5.0 Ghz
蓝牙	4.1
长度	16.30 cm
宽度	5.09 cm
最低/最高高度	3.10 cm / 6.14 cm
重量	221 g
工作温度	5°C ~ 50°C
储存温度	-20°C ~ 30°C
相对湿度	45% ~ 85%

Table of contents

Safety	24	Software update	37
General information	24	Installing the software update	
Intended use	24	automatically	37
Restriction on user group	24	Basic settings	38
Safe use	25	Overview of the basic settings	38
Preventing material damage	26	Changing the basic settings	39
Sensitive optical sensors and		Cleaning and servicing	40
components	26	Cleaning the appliance	40
Legal disclaimer	26	Troubleshooting	41
Proper use	26	Malfunctions	41
Environmental protection and		Temperature problem	43
saving energy	27	Problem with results	44
Familiarising yourself with		Transportation, storage and	
your appliance	28	disposal	45
Appliance	28	Storing the appliance	45
Status LED	29	Transporting the appliance	45
Touch display	29	Disposal	45
Functions	31	Data protection	45
Notification messages	32	After-sales service	46
Symbols	32	Model number	46
Before using for the first time	33	Information regarding Free and	
Scope of delivery	33	Open Source Software	46
Unpacking and preparing the		Technical specifications	46
appliance for use	33		
Performing the initial setup	33		
Basic operation	34		
Switching on the appliance	34		
Waking up the appliance from			
standby mode	34		
Using the appliance	34		
Sending a washing program to			
the washing machine	35		
Charging the appliance	36		
Returning the appliance to			
standby mode	36		
Restarting the appliance	36		
Switching off the appliance	36		
Calibrating the appliance	36		



Safety

Please read the safety information to ensure that you use the appliance safely.

General information

You can find general information about this instruction manual here.



- Read this instruction manual carefully. Only this ensures you will use the appliance safely and efficiently.
- This manual is intended for the user of the appliance.
- Follow the safety instructions and warnings.
- Keep the instruction manual and the product information safe for future reference or for the next owner.
- Check the appliance after unpacking it. Do not connect the appliance if it has been damaged in transit.

Intended use

Please read the information on intended use to ensure you use the appliance correctly and safely.

Only use this appliance:

- As specified in this instruction manual.
- In private households and in enclosed spaces in a domestic environment.
- Up to an altitude of max. 4000 m above sea level.

Restriction on user group

Avoid risks to children and vulnerable persons.

This appliance may be used by children aged 8 or over and by people who have reduced physical, sensory or mental abilities or inadequate experience and/or knowledge, provided that they are supervised or have been instructed on how to use the appliance safely and have understood the resulting dangers.

Do not let children play with the appliance.

Cleaning and user maintenance must not be performed by children unless they are being supervised.
Keep children under the age of 3 years and pets away from the appliance.

Safe use

Follow these safety instructions when using the appliance.

WARNING – Risk of suffocation!

- Children may put packaging material over their heads or wrap themselves up in it and suffocate.
 - ▶ Keep packaging material away from children.
 - ▶ Do not let children play with packaging material.
- Children may breathe in or swallow small parts, causing them to suffocate.
 - ▶ Keep small parts away from children.
 - ▶ Do not let children play with small parts.

WARNING – Risk of electric shock!

Penetrating moisture may cause an electric shock.

- ▶ Never expose the device to intense heat or humidity.

Preventing material damage

Follow these instructions to avoid material damage and damage to the appliance.

Sensitive optical sensors and components

Very sensitive optical sensors and other delicate components are installed in your device. Take care that you handle it carefully. Avoid applying any external forces to the device.

- Avoid any violent shocks to the device or dropping it.
- Do not step on the device.

Legal disclaimer

BSH accepts no responsibility or liability for material damage due to non-compliance with the following safety instructions.

- This appliance supports only washable garments at the moment.
- This appliance can analyze garments that consist of one or two fibers only.
- This appliance supports stains that are larger than the bottom glass (1.5 cm diameter).
- Garment analysis accuracy may be affected by inhomogeneous color patterns, moisture, or special types of dark dyeing.
- Garment and stain analysis accuracy may be affected by small textile thickness.

Proper use

Observe the following safety instructions in order to avoid personal injury and damage to property.

- Only charge the appliance using the charging cable included.
- Only connect and operate the charging cable as specified on the rating plate.
- Only store and charge the appliance indoors.
- To make best use of the battery capacity, the appliance should be stored and operated at room temperature.
- Do not expose the appliance to temperatures below 0 °C or above 40 °C.
- Do not use the charging cable if it is damaged. Replace it with an original charging cable.
- When disconnecting the charging cable from the mains, pull the plug itself to remove it – do not pull on the power cord.
- Do not pull the charging cable over sharp edges or allow it to become trapped.
- Do not use a damaged appliance.
- In the event of a fault, switch off the appliance and disconnect it from the charging cable and the mains.
- For safety reasons, only authorised after-sales service personnel are permitted to carry out repairs and fit replacement parts to the appliance.
- In the following cases, you must stop using the appliance immediately and contact the after-sales service:
 - If liquid has entered the inside of the appliance.
 - If the appliance has been dropped and damaged.

- Protect the appliance from outside weather conditions, humidity and sources of heat.

Environmental protection and saving energy

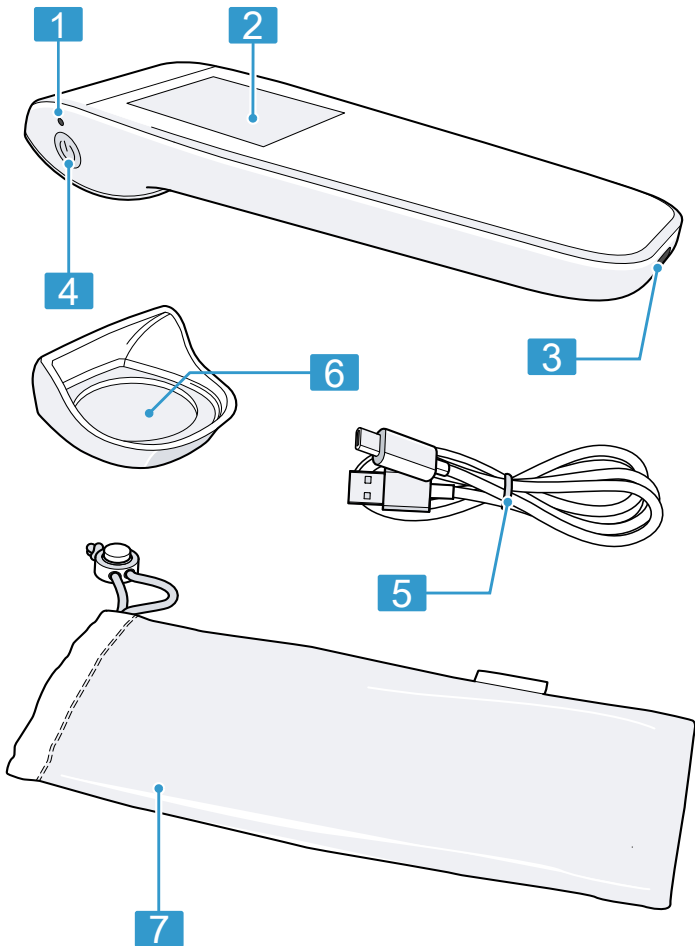
Help protect the environment by using your appliance in a way that conserves resources and by disposing of reusable materials properly.

Familiarising yourself with your appliance

Familiarise yourself with the parts of your appliance.

Appliance

You can find an overview of the parts of your appliance here.









1	Status LED	■ → "Status LED", Page 29
2	Touch display	■ → "Touch display", Page 29

3	Charging socket	■ → "Charging the appliance", Page 36
4	Power button	<ul style="list-style-type: none"> ■ → "Switching on the appliance", Page 34 ■ → "Switching off the appliance", Page 36 ■ → "Waking up the appliance from standby mode", Page 34
5	Charging cable	■ → "Charging the appliance", Page 36
6	Cover cap	■ → "Calibrating the appliance", Page 36
7	Storage pouch	■ → "Storing the appliance", Page 45

Status LED

The status LED will provide you with information about the operating status and charging status of your appliance.

LED display	Explanation
	Bluetooth is in discoverable mode.

LED display	Explanation
	The appliance is paired with the WeChat app.
	The battery is empty.
	The battery is charging.
	The appliance is in standby mode.
	The battery is fully charged.

Touch display

Here, you can find an overview of the various areas of the touch display. Use the touch display to control your appliance and obtain information about its operating status.

For operating, press the touch display or use a horizontal or vertical swipe gesture.



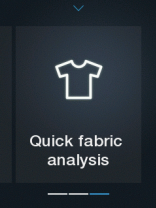
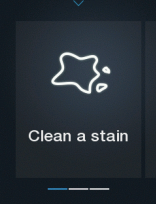
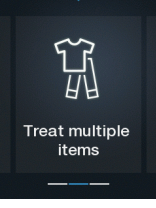
1	Battery charging status	→ "Status LED", Page 29 → "Charging the appliance", Page 36
2	Note	→ "Calibrating the appliance", Page 36 → "Software update", Page 37
3	Status bar	
4	Status of the WiFi ¹ network	→ "Adding a WiFi network", Page 39 → "Deleting a WiFi network", Page 40

¹ Wi-Fi is a registered trademark of the Wi-Fi Alliance.

5Function
Menu itemFunctions or menu items are displayed in this area of the touch display.
→ *"Functions", Page 31*¹ Wi-Fi is a registered trademark of the Wi-Fi Alliance.

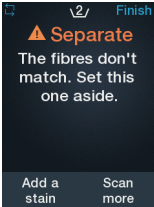
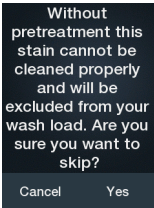
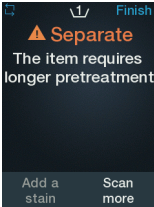
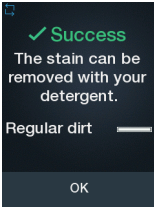
Functions

Here, you can find an overview of the various functions of your appliance in the main menu. The functions depend on the software version of your appliance.

Function	Range of functions	Use
 <p>Quick fabric analysis</p>	<ul style="list-style-type: none"> ■ Scan and analyse fabrics. → <i>"Using Quick fabric analysis", Page 34</i>	Analyses individual fabrics to provide information about their composition.
 <p>Clean a stain</p>	<ul style="list-style-type: none"> ■ Scan and analyse fabrics. ■ Scan and analyse stains. ■ Instructions for stain removal → <i>"Using Clean a stain", Page 35</i>	Analyses a fabric with a stain to provide information about stain removal.
 <p>Treat multiple items</p>	<ul style="list-style-type: none"> ■ Scan and analyse fabrics. ■ Scan and analyse stains. ■ Instructions for stain removal ■ To add fabrics to a wash load. ■ To exclude items from a wash load. ■ Information on the recommended washing program → <i>"Using Treat multiple items", Page 35</i> → <i>"Sending a washing program to the washing machine", Page 35</i>	Scans several fabrics with and without stains in order to create a load. Provides the optimal washing program recommendation for the entire load.




Notification messages





Here, you can find an overview of the various notification messages on your appliance.


Notification message	Function	Explanation	Recommendation
	→ "Using Treat multiple items", Page 35	The washing recommendation for the scanned fabric does not match the washing recommendation for the existing wash load.	In order to avoid damaging the fabric and produce optimum washing results, do not wash the item in the current load.
	→ "Using Treat multiple items", Page 35	The recommended stain removal was skipped.	To achieve optimum washing results, remove the stain before you place the fabric in the wash load.
	→ "Using Treat multiple items", Page 35	The required stain removal is a time-consuming process.	Continue preparing your wash load without stained item. → "Using Clean a stain", Page 35
	→ "Using Treat multiple items", Page 35 → "Using Clean a stain", Page 35	The stain does not require any special pretreatment.	The item can be directly washed in the washing machine.

Symbols

Here you can find an overview of the symbols on your appliance.

Symbol	Explanation
	Back
	Battery empty
	Battery charging

Symbol	Explanation
	Language
	Display status bar
	Close options
	Repeat scan

Symbol	Explanation
	Error message An error has occurred on the appliance. → "Notification messages", Page 32 → "Calibrating the appliance manually", Page 37

Before using for the first time

Prepare the appliance for use.

Scope of delivery

After unpacking all parts, check for any damage in transit and completeness of the delivery.

If you have any complaints, contact the dealer from whom you purchased the appliance or our after-sales service.

The following are included with the appliance:

- X-Spect
- Cover cap
- Charging cable
- Storage pouch
- Quick start guide
- Warranty card

Unpacking and preparing the appliance for use


Prepare the appliance for use.

CAUTION

Hazard due to incorrect use

- Only charge the appliance using the charging cable included.

- Do not charge the appliance at temperatures below 0 °C or above 40 °C.

1. Remove all the packaging material and protective sleeves from the appliance.
2. Check the appliance for visible damage.
3. If  is blinking, charge the appliance.
→ "Charging the appliance", Page 36
4. Perform the initial setup
→ Page 33.

Performing the initial setup

When switching on for the first time or after resetting to factory settings, you must pair the appliance with the companion app and your washing machine.

Requirements

- You have access to a WiFi home network (Wi-Fi¹).
- You now have a Home Connect account.
- Your washing machine is connected to your Home Connect account connected.

- **Note:** You can find information about the app on our Home Connect website: www.home-connect.com.

Couple the appliance with the Home Connect account and your washing machine.

→ "Automatically pairing the appliance", Page 34

The companion app and the appliance guide you through the individual steps of the pairing.

¹ Wi-Fi is a registered trademark of the Wi-Fi Alliance.


Automatically pairing the appliance

1. Switch on the appliance
→ *Page 34*.
- ✓ The touch display shows the welcome screen. A QR code then appears.
2. Scan the QR code with the WeChat app.
3. Follow the instructions in the companion app.
 - ✓ The appliance connects to the companion app.
 - ✓ The appliance connects to your Home Connect account. A confirmation then appears.
4. Press Finish setup.
 - ✓ The main menu appears.
 - ✓ The appliance is now ready for use.

Basic operation

You can find out everything you need to know about operating your appliance here.

Switching on the appliance

- ▶ Press and hold the  button for 3 seconds.
- ✓ The touch display shows the welcome screen and then the main menu.

Waking up the appliance from standby mode

Requirement: The appliance is in standby mode.

→ *"Status LED", Page 29*

- ▶ Press the  button.

Using the appliance

1. Navigate to the main menu by swiping and selecting a function.

- → *"Using Quick fabric analysis", Page 34*
- → *"Using Clean a stain", Page 35*
- → *"Using Treat multiple items", Page 35*

2. Scan a fabric or stain.

Note

To improve detection and recommendation accuracy, note the following:

- Only scan dry stains. If you scan wet or damp fabrics or stains, the lens will get dirty and you need to clean it with a piece of cloth.
 - Firmly press the appliance on the garment or stain without movement as long as the display shows "Scanning".
 - If the garment has a colorful pattern, scan the darkest spot.
 - If the garment consists of several fabrics, scan at multiple spots.
 - Position your appliance lens on the center of the stain to improve detection accuracy.
- ✓ The appliance analyses the fabric and/or the stain.
 3. Check the results of the analysis.
 4. Treat the stain as recommended or send the recommended washing program to the washing machine
→ *Page 35*.

Using Quick fabric analysis

1. In the main menu, select the Quick fabric analysis function.
 - ✓ The touch display shows "Hold the scanner tight against the fabric and scan."
2. Hold the sensor to the fabric.
3. Press Scan now.
 - ✓ The appliance scans and analyses the fabric.

- ✓ The touch display shows the composition of the fabric.
- 4. To scan another item, touch Rescan.
- 5. To close the quick fabric analysis, touch Close.
- ✓ The main menu appears.

Using Clean a stain

1. In the main menu, select the Clean a stain function.
- ✓ The touch display shows "Hold the scanner tight against the stain and scan."
2. Hold the sensor to the stain and press Scan now.
- ✓ The appliance scans the stain. Then the touch display shows "Hold the scanner tight against the fabric and scan."
3. Hold the sensor to the fabric and press Scan now.
- ✓ The appliance scans the fabric and analyzes the stain. The touch display then shows a confirmation and the composition of the stain. If no pretreatment is required, the touch display shows "Regular dirt".
4. Touch Start treatment.
- ✓ The appliance runs through the guide steps for stain removal.
5. Remove the stain by following the guide step by step.

Using Treat multiple items

1. In the main menu, select the Treat multiple items function.
- ✓ The touch display shows "Hold the scanner tight against the fabric and scan."
2. Hold the sensor to the fabric and press Scan now.

To add a stain to the scanned fabric, press Add stain. Then scan the stain and follow the instructions for stain removal or press Skip to skip stain removal.

- ✓ The touch display shows "The item was added to your wash load."
- 3. Press Scan more.
- 4. Repeat the process.

If the scanned fabric for the current wash load is not suitable or stains have to be removed, the touch display shows a notification message. → *"Notification messages"*, Page 32

5. Press Finish to confirm the wash load.
 - ✓ The appliance analyses the scanned fabrics.
 6. Select the type of fabric and press Next.
- If no type of fabric is to be selected, press Skip.
7. Press Send washing program to the washing machine → Page 35 or press Close to end the process.
 - ✓ The main menu appears.

Sending a washing program to the washing machine

Requirement: The appliance displays the recommended washing program. → *"Using Treat multiple items"*, Page 35

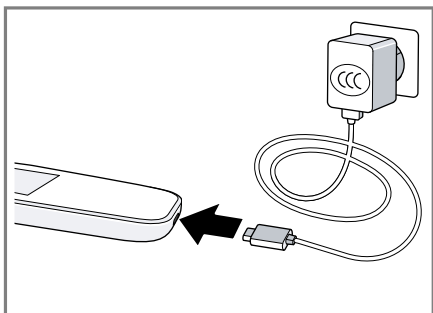
1. Check the recommended washing program.
- Navigate through the display using a vertical swipe gesture.
2. Press Send to washer.
 - ✓ The washing program is sent to the washing machine but not starting manually. A sending confirmation is then displayed.
 3. Press Close.
 - ✓ The main menu appears.

4. To start the washing program, press the start button on the washing machine.

Charging the appliance

Use the supplied charging cable to charge the appliance.

1. Connect the charging cable to a USB port.




2. Connect the charging cable to the appliance charging socket.
 - ✓ The status LED lights up red.
 - ✓ When it is switched off, the touch display shows the battery charging status. When it is switched on, it shows the status bar.
 - ✓ Once the battery is fully charged, the status LED lights up green.
3. Disconnect the charging cable from the appliance.
4. Disconnect the charging cable from the USB port.


Returning the appliance to standby mode

- ▶ Press the  button.
- ✓ The status LED flashes green.

Restarting the appliance

- ▶ Press the  button for 7 seconds.
- ✓ The appliance restarts.

Switching off the appliance

1. Press and hold the  button for 3 seconds.
 - ✓ The touch display shows "Do you want to switch off the device?".
2. Touch Yes.
 - ✓ The appliance switches off.

Calibrating the appliance

The appliance prompts you to calibrate at regular intervals. You can calibrate the appliance immediately or later.

Note: Calibrating the appliance later will affect the detection accuracy.

→ "Calibrating the appliance automatically", Page 36

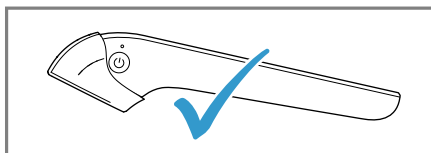
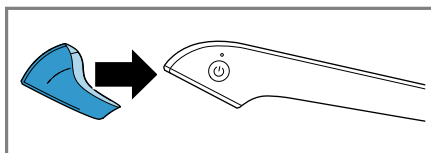
→ "Calibrating the appliance manually", Page 37

Calibrating the appliance automatically

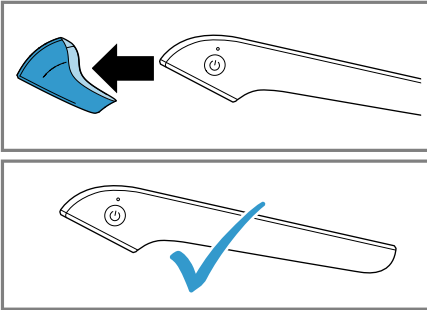
Note: Press Skip to skip calibration. The status bar shows .

Requirement: The touch display shows "X-Spect sensor need calibration. Before starting, place the cover cap on the appliance."

1. Place the cover cap on the sensor.



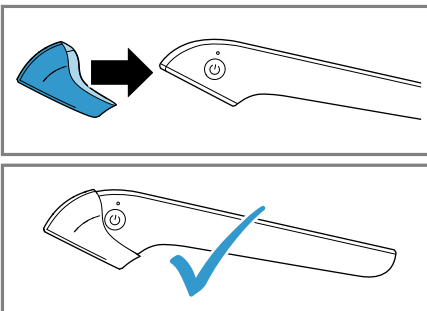
2. Press Start.
- ✓ The calibration screen appears. Then the touch display shows "Calibration complete. You can now remove the cover cap."
3. Remove the cover cap.



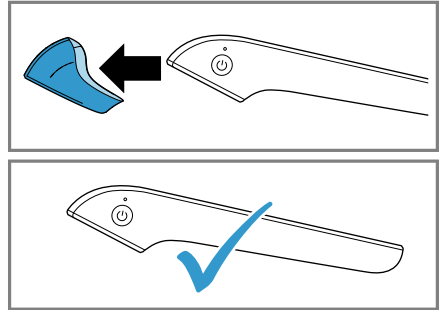
4. Press OK.
- ✓ The main menu appears.
- ✓ The appliance is now ready for use.

Calibrating the appliance manually

1. Pull downwards to open the status bar in the main menu.
2. Press in the status bar.
- ✓ The Settings menu opens. If calibration was not skipped previously, open the Calibration menu item in the Settings manually.
3. Place the cover cap on the sensor.



4. Press Start calibration.
- ✓ The calibration screen appears. Then the touch display shows "Calibration complete. You can remove the cover cap."
5. Remove the cover cap.



6. Press OK.
- ✓ The main menu appears.

Software update

Software updates will further optimise your appliance and add new functions.

Installing the software update automatically

On start up, the appliance searches for new software updates.

Requirement: The touch display shows "New software update is available. Do you want to update?"

- Press Update.

If the battery level is less than 75%, the touch display shows "Connect your device to the charger." Connect the charger.
→ "Charging the appliance",
Page 36

- ✓ The software update will be installed and the appliance restarts.

Basic settings

You can configure the appliance to meet your needs.

Overview of the basic settings

Here you can find an overview of the basic settings and factory settings. The basic settings depend on the features of your appliance.

Basic setting	Options	Description
WiFi	Add WiFi network Delete WiFi network	Adds a new WiFi network. → <i>"Adding a WiFi network", Page 39</i> Deletes a saved WiFi network. → <i>"Deleting a WiFi network", Page 40</i>
Add washer	No options available.	To connect a new washing machine to the appliance by scanning a QR code with WeChat app. The washing machine must already be paired with the Home Connect app.
Calibration	No options available.	Calibrating the appliance manually → <i>Page 37</i> .
Language	See options on the appliance.	Setting the language.
Standby	■ 30 seconds ■ 1 minute ■ 2 minutes ■ 3 minutes ■ 5 minutes	Time until the appliance switches to standby mode. → <i>"Setting the standby time", Page 39</i>
Auto switch off	■ 5 minutes ■ 10 minutes ■ 15 minutes ■ 20 minutes ■ 30 minutes	Time until the appliance switches off automatically. → <i>"Setting Auto switch off", Page 39</i>
View T&C	No options available.	To view the terms and conditions of the appliance by scanning a QR code.

Basic setting	Options	Description
Reset	No options available.	Restores changed settings to the factory settings. → "Resetting appliance", Page 39 The settings for initial use must be configured. → "Performing the initial setup", Page 33
Device info	No options available.	Displays the appliance information.

Changing the basic settings

- 1. Pull downwards in the main menu to open the status bar.
- ✓ The status bar shows Settings.
- 2. Pull down Settings in the status bar.
- ✓ The Settings menu opens.
- 3. Press the required menu item and change the setting.
Navigate through the menu using vertical swipe gestures.
- 4. Press to exit the menu item.
- 5. Press to close the Settings.

Setting the standby time

You can define the time period after which the appliance switches to standby mode.

- 1. Open Settings.
- 2. Press Standby.
- 3. Press the time period you require.
- ✓ The new time has been saved.
- 4. Press < to exit the menu item.
- 5. Press X to close the Settings.

Setting Auto switch off

You can define the period of time after which the appliance automatically switches itself off.

- 1. Open Settings.
- 2. Press Auto switch off.

- 3. Press the time period you require.
- ✓ The new time has been saved.
- 4. Press < to exit the menu item.
- 5. Press X to close the Settings.

Resetting appliance

You can reset your appliance to the factory settings.

- 1. Open Settings.
- 2. Press Reset.
- ✓ The touch display shows "Reset will restore the factory settings. All configurations will be lost."
- 3. Press Reset.
- ✓ The touch display shows "Are you sure you want to reset the device?".
- 4. Press Yes.
- ✓ The appliance restarts.
- 5. Perform the initial configuration
→ Page 33.

Adding a WiFi network

You can store up to 10 WiFi networks on your appliance.

- 1. Open Settings.
- 2. Press WiFi .
- 3. Press Add WiFi.
- ✓ The touch display shows a QR code.
- 4. Scan the QR code with the WeChat app.

en Cleaning and servicing

- 5. Follow the instructions in the companion app on your mobile appliance.

Deleting a WiFi network

- 1. Open Settings.
- 2. Press WiFi .
- 3. Press the recycle bin symbol next to the WiFi network.
 - ✓ The touch display shows "Are you sure you want to delete ["WiFi name"] WiFi connection?".
- 4. Press Yes.
 - ✓ The WiFi network has been deleted.

Cleaning and servicing

To keep your appliance working efficiently for a long time, it is important to clean and maintain it carefully.

Cleaning the appliance

Clean the appliance as specified. This will ensure that the different parts and surfaces of the appliance are not damaged by incorrect cleaning or unsuitable cleaning products.

- Follow the cleaning instructions.

Part	Cleaning instructions
Appliance lens	Clean with a moist soft towel (microfiber)
Calibration cap	Blow dust away from the calibration material.

Troubleshooting

You can rectify minor faults on your appliance yourself. Read the troubleshooting information before contacting Customer Service. This will avoid unnecessary costs.

WARNING **Risk of injury!**

Improper repairs are dangerous.

- ▶ Repairs to the appliance should only be carried out by trained specialist staff.
- ▶ If the appliance is defective, call Customer Service.

Malfunctions

Errors	Cause	Troubleshooting
Something went wrong, please check your WiFi connection.	No active WiFi connection is configured on your device.	<ul style="list-style-type: none"> ▶ Check your router availability. ▶ Configure a new WiFi network on your device. → "Adding a WiFi network", Page 39
Our cloud cannot be reached, please check your internet connection or try again later.	The active WiFi network does not have a working internet connection.	<ul style="list-style-type: none"> ▶ Check your router availability.
	The X-Spect cloud is unavailable due to some maintenance downtime.	<ul style="list-style-type: none"> ▶ Try again later.
Something went wrong on our cloud, please try again later.	The X-Spect cloud is unavailable due to some maintenance downtime.	<ul style="list-style-type: none"> ▶ Try again later.
Calibration is required. Please attach the cap and press start.	To improve detection and recommendation accuracy, the device should be calibrated from time to time.	<ul style="list-style-type: none"> ▶ → "Calibrating the appliance automatically", Page 36
Something went wrong, please make sure the calibration cap is attached.	The device could not detect a calibration cap attached to its sensors while calibrating.	<ul style="list-style-type: none"> ▶ Attach the calibration cap to the device. Note: Do not remove the calibration cap as long as the display shows "Calibrating".
Calibration has failed. Please try again later.	The device calibration data was not saved on the X-Spect cloud.	<ul style="list-style-type: none"> ▶ Try again later.

Errors	Cause	Troubleshooting
Sending program has failed. Please make sure your appliance is connected to the internet.	The appliance is not connected to the internet.	<ul style="list-style-type: none"> ▶ Check the internet connection of your appliance. <p>For details, refer to the user manual of your appliance. If problem persists, please contact customer service.</p>
Sending program has failed. Please do not manually control your Home Appliance.	X-Spect device is sending the program to the appliance.	<ul style="list-style-type: none"> ▶ Do not manually control your appliance by hand until the X-Spect device has transmitted the program to the appliance successfully.
Sending program has failed. Another program is currently in progress.	A program is running on your appliance.	<ul style="list-style-type: none"> ▶ Stop the running program on the appliance. ▶ Wait until the program is finished and try again.
Device registration has failed, please reboot the device to repeat setup.	Something went wrong during the device setup process.	<ol style="list-style-type: none"> 1. → <i>"Restarting the appliance"</i>, Page 36 2. → <i>"Performing the initial setup"</i>, Page 33 3. If problem persists, contact the customer service → Page 46.
This device is not registered, please contact customer service.	Something went wrong during the device setup process.	<ul style="list-style-type: none"> ▶ Contact the customer service → Page 46.
The server cannot verify your device identity. Please set up your device again.	The device permissions were revoke. The server can not identify your device.	<ol style="list-style-type: none"> 1. Reset the device. → Page 39 2. Set up the device. → Page 33
New terms & conditions are available. Please accept them in the Home Connect app and try again.	New Terms and Conditions must be accepted.	<ul style="list-style-type: none"> ▶ Accept the new Terms and Conditions in your Home Connect app.
You reached your quota limit, please try again later.	Your device has sent too many requests to our cloud in one day. To improve the cloud performance, your device is temporarily disabled for 24 hours.	<ul style="list-style-type: none"> ▶ Try again later.
Low charging current detected, please replace your adapter.	The device detected a slow charging rate, for example, if the adapter is faulty or the cable is not working.	<ol style="list-style-type: none"> 1. Try a different CCC safety-certified adapter or cable. 2. If problem persists, contact the customer service → Page 46.

Errors	Cause	Troubleshooting
Charger not found. If problem persists, please contact customer service.	The device could not detect a charger to recharge the battery. This can happen if the adapter is faulty or the cable is not working.	<ol style="list-style-type: none"> 1. Try a different CCC safety-certified adapter or cable. 2. If problem persists, contact the customer service → <i>Page 46</i>.
Sensor not found. If problem persists, please contact customer service.	The device could not detect its sensors.	<ol style="list-style-type: none"> 1. Restart the device. → <i>Page 36</i> 2. If problem persists after restarting the device, contact the customer service → <i>Page 46</i>.
Temperature sensor not found. If problem persists, please contact customer service.	The device could not detect its sensors.	<ol style="list-style-type: none"> 1. Restart the device. → <i>Page 36</i> 2. If problem persists after restarting the device, contact the customer service → <i>Page 46</i>.
Haptic sensor not found. If problem persists, please contact customer service.	The device could not detect its sensors.	<ol style="list-style-type: none"> 1. Restart the device. → <i>Page 36</i> 2. If problem persists after restarting the device, contact the customer service → <i>Page 46</i>.
Gauge sensor not found. If problem persists, please contact customer service.	The device could not detect its sensors.	<ol style="list-style-type: none"> 1. Restart the device. → <i>Page 36</i> 2. If problem persists after restarting the device, contact the customer service → <i>Page 46</i>.
Touch panel not found. If problem persists, please contact customer service.	The device could not detect its display.	<ol style="list-style-type: none"> 1. Restart the device. → <i>Page 36</i> 2. If problem persists after restarting the device, contact the customer service → <i>Page 46</i>.
WiFi/BT not found. If problem persists, please contact customer service.	The device could not detect its WiFi adapter.	<ol style="list-style-type: none"> 1. Restart the device. → <i>Page 36</i> 2. If problem persists after restarting the device, contact the customer service → <i>Page 46</i>.

Temperature problem

Errors	Cause	Troubleshooting
High temperature detected. If problem persists, please contact customer service.	The device detected a high temperature during its operation. To avoid battery accidents, the device will automatically shutdown.	<ol style="list-style-type: none"> 1. To prevent damage, don't expose your battery to high temperatures of 60 °C or above. 2. If problem persists in normal working environments, contact the customer service → <i>Page 46</i>.

Errors	Cause	Troubleshooting
Charging is disabled because of low device temperature. If problem persists, please contact customer service.	The device detected a low temperature during its operation. To improve battery lifetime, the device will automatically stop charging.	<ol style="list-style-type: none">1. To improve charging efficiency, don't expose your battery to low temperatures.2. If problem persists in normal working environments, contact the customer service → <i>Page 46</i>.

Problem with results

Errors	Cause	Troubleshooting
Something went wrong, please make sure you scan a textile.	The device could not detect a garment touching its sensors while scanning.	► Firmly press the device on the garment without movement as long as the display shows “Scanning”.
Something went wrong, please make sure you scan a stain.	The device could not detect a stain touching its sensors while scanning.	► Firmly press the device on the stain without movement as long as the display shows “Scanning”.
This textile fibers don't fit into your basket. Please set this item aside.	The device detected textile fibers that cannot be washed with previously added fibers in your basket, for example, if you try to wash Cotton and Silk together.	<ol style="list-style-type: none">1. To avoid textile damage, set the item aside and do not put it with this basket in your washing machine.2. Wash the item separately with other similar items.

Transportation, storage and disposal

You can find out here how to prepare your appliance for transportation and storage. You will also find out how to dispose of old appliances.

Storing the appliance

Store your appliance properly so that there is no risk of damage to the appliance.

Note: Store the appliance in a dry place and protect it from high temperatures and external influences. Always keep your appliance in the supplied storage pouch when it is not being used.

1. Switch off the appliance.
→ Page 36
2. Place the appliance in the storage pouch.

Transporting the appliance

The lithium-ion batteries in the device are subject to the requirements of dangerous goods legislation. The batteries can be transported by the user by road without any further requirements.

In the event that they are shipped by a third party (e.g. transported by air or freight carrier), special requirements regarding packaging and identification must be met. In this case, a dangerous goods expert must be consulted when preparing the goods for dispatch.

Disposal

If they are disposed of in an environmentally responsible manner, valuable materials can be reused.

The device, battery, accessories and packaging should be recycled in an environmentally responsible manner.



Do not dispose of the device and the battery in the household rubbish.

Integrated batteries may only be removed by specialist personnel for the purpose of disposal.

Old Appliance

This appliance contains rechargeable lithium-ion batteries. The appliance must therefore only be disposed of by an authorised after-sales service or dealer.

Data protection

Please see the information on data protection.

The first time your appliance is registered on a home network connected to the Internet, your appliance will transmit the following types of data to the Home Connect server (initial registration):

- Unique appliance identification (consisting of appliance codes as well as the MAC address of the Wi-Fi communication module installed).
- Security certificate of the Wi-Fi communication module (to ensure secure data connection).
- The current software and hardware version of your appliance.
- Status of any previous reset to factory settings.

This initial registration prepares the Home Connect functions for use and is only required when you want to use the Home Connect functions for the first time.

Note: Please note that the Home Connect functions can only be utilised with the Home Connect app. Information on data protection can be called up in the Home Connect app.

After-sales service

If you have any queries or are unable to rectify errors on the device yourself, contact our after-sales service. We will always find the right solution in order to avoid any unnecessary visits by our customer service technician. When contacting the after-sales service, you will need the model number (E-Nr.) of your device. You can contact the after-sales service using the following telephone number:
CN 400 885 5888

Model number

The model number (E-Nr.) can be found on the rating plate and in your device settings. The rating plate is situated on the underside of the packaging. You will also find the E-Nr. under the Device info menu item in the Settings.
→ *"Overview of the basic settings", Page 38*
Making a note of your device details and the after-sales telephone number will enable you to find them again quickly.

Information regarding Free and Open Source Software

This product includes software components that are licensed by the copyright holders as free software or open source software. You can access the license information via your WeChat MiniApp or via the device: "Settings > Device info > QRCode on the third page". You can also send a request to ossrequest@bshg.com or to BSH Hausgeräte GmbH GmbH, Carl-Wery-Str.34, D-81739 München, Germany. The source code will be made available to you on request. To file a request, please email to ossrequest@bshg.com or send a written request to BSH Hausgeräte GmbH GmbH Carl-Wery-Str.34 D-81739 München Reference „OSSREQUEST“ The cost of performing your request will be charged to you. This offer is valid three years from the date of purchase or at least as long as we offer support and spare parts for the product.

Technical specifications

Facts and figures for your appliance can be found here.

Model	XA1504A5HW
Battery capacity	Built-in 1000 mAh lithium-ion rechargeable battery
System power (normal status)	3.7 V / 250 mA

Display	2.0-inch 240x320 LED backlight dual-touch display with IPS technology and full RGB
Processor	1.0 GHz processor
Memory	2 Gb NAND Flash
WiFi	802.11a/b/g/n/ac 2.4 Ghz, 5.0 Ghz not supported
Bluetooth	4.1
Length	16.30 cm
Width	5.09 cm
Height min. / max.	3.10 cm / 6.14 cm
Weight	221 g
Operating temperature	5°C ~ 50°C
Storage temperature	-20°C ~ 30°C
Relative humidity	45% ~ 85%
Regulatory and Certifications	<ul style="list-style-type: none"> ■ SRRC ■ BQB ■ RoHS ■ UN38.3 ■ GB 31241-2014 ■ GB4943.1 ■ GB9254, CISPR 32, CISPR 35 ■ GB/T 17618-2015



感谢您购买博世家电！

立即在MyBosch上为您的电器注册，便可直接获得如下福利：

- 专家级电器使用提示与技巧
- 保修延长选项
- 附件和备件折扣
- 易于获得数字手册和所有电器数据
- 便于享受博世家电服务

注册免费而简单 – 同样针对移动电话：
www.bosch-home.com/welcome



需要帮助吗？ 可以从此处获取。

针对博世家电的专家级建议，
需要博世专家帮助解决问题或维修。
了解博世支持您的各种方式：
www.bosch-home.com/service



8001149383 (990819)

zh, en